

MAY 2001

The Glen Gazette

OFFICERS & DIRECTORS

President:

Jack Rutherford 373-3732

Vice-President:

Candy Pollock 644-0304

Secretary:

Bob Stevens, 649-3902

Treasurer:

Jack Rugar 647-8431

At-Large Director:

Virginia Capra 372-0302

Newsletter:

Bob Stevens 649-3902

Architectural Control:

Ron Johnson 372-3949

Chuck Adams 649-4214

Jessa Lee Lapatra 647-1505

Gardening:

Pat Claus 333-9518

Carol Rutherford 373-3732

Welcoming:

Pat Claus 333-9518

Managing Agent:

Joseph Chaffers (MCC) 624-7552

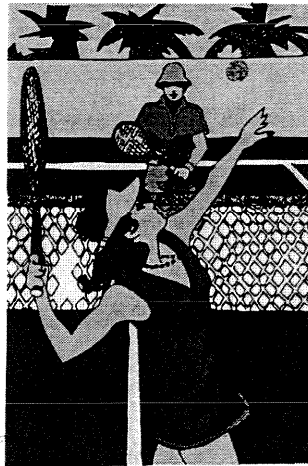
BOARD NEWS

The Board of Directors met on **April 17, 2001 at 5:00 p.m. in Unit #36.**

TENNIS COURT

RESURFACING

The Glen has entered into a contract with Moezzi & Company to wash and clean the tennis court, and patch and level as needed. Three sanded color coats will be applied. The court will be painted dark green (the playing surface).



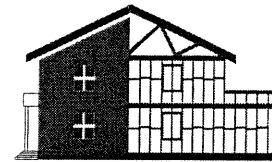
Thanks to Craig Wooley for negotiating the contract with Moezzi & Company

BULLETIN BOARDS

Thanks to President Jack's nephew, Colin Millard of Capitol Lighting and Plastics, for the Plexiglas covered mini-bulletin boards, which were installed at each of the four mailboxes. These bulletin

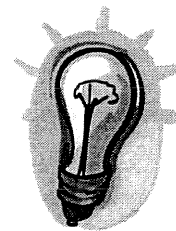
boards are being used for official Glen announcements, such as Board meeting notices.

ROOF INSPECTIONS

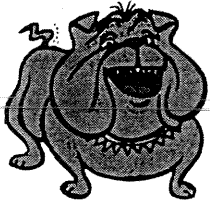


Scudder Roofing continues to inspect the roofs of the Glen. Repairs have been made as required.

ENERGY CONSERVATION EFFORTS



In an effort to reduce our electrical usage, the Glen is replacing existing bulbs with 23-25 watt florescent bulbs. These bulbs have an estimated life of 10,000 hours and should help the Glen cope with the energy shortage.

PET REMINDER

All Glen residents are reminded that it is against the Rules and Regulations to own a pet, which weighs more than 40 pounds.

Pet owners are reminded **AGAIN** of their obligation to pick up solid waste after their pets. It is not enough to simply cover up the waste matter. It must be removed. Thank you for your cooperation.

**REMINDER**

All residents of the Glen are invited to attend the regular monthly meetings of the Glen Board of Directors. The Board members are interested in learning the views of owners and tenants alike.

PERIMETER FENCING

A chain-link fence has been constructed to the rear of the tennis court, extending behind units 15-17. Installation of this fence will make it more difficult for our up hill neighbors to throw their trash down the hill onto Glen property.

RESIDENT OF THE MONTH

The Glen's first Resident of the Month is Craig Wooley, Unit #26. Craig and Phoebe live in the Glen six months out of the year, spending their time away from California on Madeline Island in Wisconsin.

Craig has been responsible for the earthquake preparedness flyer recently distributed to Glen residents. He has also been instrumental in locating and painting red the gas outlets in the Glen.



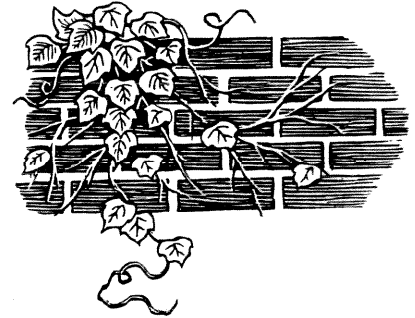
As noted above, Craig has also spent a great deal of time and energy in caring for the tennis courts, sweeping, cleaning, and now arranging for the repainting of the courts. Craig has also painted the benches and walls of the tennis area.

WELCOME

All the residents of The Glen would like to give a warm welcome to Mike & Donna Rechsteiner who moved into Unit #54 on April 18, 2001.

Pat Claus, Chair, Welcoming Committee presented the Rechsteiners an informational

packet and a basket with some plants.

GARDENING NEWS

Pat Claus and Carol Rutherford, of the Gardening Committee continue their excellent work with our Gardening crew. In addition to working very closely with Susan and her crew, Pat and her husband, Sandy, worked hard cleaning up the debris behind units 3, 5, 7 & 9 after the hill was cleaned.

The perimeter fence discussed above should put a stop to our hilltop neighbors using the Glen as a trash dump.

RACOONS

If you see or hear raccoons nesting, please call President Jack so that he can have the roof inspected for damage.

**NEXT BOARD MEETING**

The next meeting of the Board of Directors will be on **Tuesday, May 22, 2001 at 5:00 p.m. in unit #36**